

EVERWELL PARTS, INC.

EW202-3-SSB43 STAINLESS STEEL WALL BRACKET SUPPORTS
VALID FOR USE INSIDE AND OUTSIDE THE HVHZ ZONE (SEE LIMITATIONS HEREIN)

NON-SITE-SPECIFIC STRUCTURAL PERFORMANCE EVALUATION. A DESIGN PROFESSIONAL SHALL BE RESPONSIBLE FOR CERTIFYING THE APPLICATION OF THIS INFORMATION TO ANY SITE-SPECIFIC LOCATION.

MAXIMUM ALLOWABLE
DESIGN PRESSURES (ASD):

+/- 60 PSF*

*THIS WALL BRACKET SHALL NOT BE USED AT PARAPETS, ANY PART OF THE BUILDING THAT EXCEEDS THE FINISHED ROOF ELEVATION, OR ANY WALL "ZONE 5" LOCATION PER ASCE 7-22.

DESIGN NOTES:

DESIGN PRESSURES CALCULATED FOR USE WITH THIS SYSTEM SHALL BE DETERMINED SEPARATELY ON A JOB-SPECIFIC BASIS IN ACCORDANCE WITH THE GOVERNING CODE USING ASD METHODOLOGY. SITE-SPECIFIC PRESSURE REQUIREMENTS AS DETERMINED IN ACCORDANCE WITH ASCE 7-22 CHAPTER 29.3.2 (SOLID ATTACHED SIGNS) AND CHAPTER 16 OF FLORIDA BUILDING CODE EIGHTH EDITION (2023) SHALL BE LESS THAN OR EQUAL TO THE LATERAL AND UPLIFT DESIGN PRESSURE CAPACITY VALUES LISTED HEREIN FOR ANY ASSEMBLY AS SHOWN.

TERMINOLOGY:

THE FOLLOWING ABBREVIATIONS MAY APPEAR IN THIS APPROVAL:

"ADTL." FOR "ADDITIONAL", "AHJ" FOR "AUTHORITY HAVING JURISDICTION", "ALUM" FOR "ALUMINUM", "ASD" FOR "ALLOWABLE STRESS DESIGN", "BO" FOR "BUILD-OUT", "CS" FOR "CARBON STEEL", "EA." FOR "EACH", "E.D./"EDGE"/"EDGE DIST." FOR "EDGE DISTANCE", "ELEV" FOR "ELEVATION", "EMBED" FOR "EMBEDMENT", "EQ"/"EQUIV." FOR "EQUIVALENT", "EXT" FOR "EXTERIOR", "FBC" FOR "FLORIDA BUILDING CODE", "ft" OR " ' " FOR "FEET", "G" FOR "SPECIFIC GRAVITY", "GA" FOR "GAUGE", "GALV" FOR "GALVANIZED", "GFB" FOR "GROUT-FILLED BLOCK", "GR" FOR "GRADE", "HOLLOW" FOR "HOLLOW BLOCK", "HORIZ" FOR "HORIZONTAL", "HVHZ" FOR "HIGH-VELOCITY HURRICANE ZONE", "in" OR " ' " FOR "INCHES", "INT" FOR "INTERIOR", "KSI" FOR "1,000 lb / in²", "L" FOR "LENGTH", "LB" FOR "POUND", "MAX" FOR "MAXIMUM", "MIN" FOR "MINIMUM", "N.T.S." FOR "NOT TO SCALE", "O.C." FOR "ON-CENTER", "P.E." FOR "PROFESSIONAL ENGINEER", "PERP" FOR "PERPENDICULAR", "PSF" FOR "POUNDS PER SQUARE FOOT (lb/ft²)", "PSI" FOR "POUNDS PER SQUARE INCH (lb/in²)", "QTY" FOR "QUANTITY", "REF." FOR "REFERENCE", "SCHED." FOR "SCHEDULE", "SDS" FOR "SELF-DRILLING SCREWS", "SMS" FOR "SHEET METAL SCREWS", "SPECS" FOR "SPECIFICATIONS", "SS" FOR "STAINLESS STEEL", "SUB" FOR "SUBMITTAL", "TAS" FOR "TESTING APPLICATION STANDARD", "TYP." FOR "TYPICAL", "ULT" FOR "ULTIMATE LOADS", "U.N.O." FOR "UNLESS NOTED OTHERWISE", "UTS" OR "Fu" FOR "ULTIMATE TENSILE STRENGTH/STRESS", "VERT" FOR "VERTICAL", "WLL" FOR "WORKING LOAD LIMIT", "W/" FOR "WITH", "W/O" FOR "WITHOUT", "YS" FOR "YIELD STRENGTH", "#" FOR "NUMBER", "&" FOR "AND", AND "Ø" FOR "DIAMETER".

CONTACT ENGINEERING EXPRESS FOR ADDITIONAL ABBREVIATION/TERMINOLOGY CLARIFICATIONS.

GENERAL NOTES:

- THIS SYSTEM HAS BEEN DESIGNED AND SHALL BE FABRICATED IN ACCORDANCE WITH THE REQUIREMENTS OF THE FLORIDA BUILDING CODE 8TH EDITION (2023). ALSO APPLICABLE FOR THE IBC/IRC (2021). DESIGN SHALL UTILIZE ASD DESIGN METHOD USING ASCE 7-22 CODES FOR SITE SPECIFIC APPLICATIONS AS APPLICABLE.
- APPLICABLE FOR USE WITHIN AND OUTSIDE THE HVHZ. DESIGN CRITERIA BEYOND AS STATED HEREIN MAY REQUIRE ADDITIONAL SITE-SPECIFIC SEALED ENGINEERING.
- THE ARCHITECT/ENGINEER OF RECORD FOR THE PROJECT SUPERSTRUCTURE WITH WHICH THIS DESIGN IS USED SHALL BE RESPONSIBLE FOR THE INTEGRITY OF ALL SUPPORTING SURFACES TO THIS DESIGN WHICH SHALL BE COORDINATED BY THE PERMITTING CONTRACTOR.
- MAXIMUM DIMENSIONS AND WEIGHT OF A/C UNIT SHALL CONFORM TO SPECIFICATIONS STATED HEREIN. THIS PERFORMANCE EVALUATION DOES NOT CERTIFY THE INTEGRITY OF THE MECHANICAL UNITS SUPPORTED BY THIS WALL BRACKET.
- SEPARATE 'SITE-SPECIFIC' SEALED ENGINEERING SHALL BE REQUIRED IN ORDER TO DEVIATE FROM LOADS, OR MAXIMUM MEMBER SPANS CONTAINED HEREIN.
- THE SYSTEM DETAILED HEREIN IS GENERIC AND DOES NOT PROVIDE INFORMATION FOR A SPECIFIC SITE. FOR SITE CONDITIONS DIFFERENT FROM THE CONDITIONS DETAILED HEREIN, A LICENSED ENGINEER OR REGISTERED ARCHITECT SHALL PREPARE SITE SPECIFIC DOCUMENTS FOR USE IN CONJUNCTION WITH THIS DOCUMENT.
- ALL FASTENERS TO BE 3/8"Ø OR GREATER SAE GR 5 UNLESS NOTED OTHERWISE. FASTENERS SHALL BE CADMIUM-PLATED OR OTHERWISE CORROSION-RESISTANT MATERIAL AND SHALL COMPLY WITH "SPECIFICATIONS FOR ALUMINUM STRUCTURES" & ANY APPLICABLE FEDERAL, STATE, AND/OR LOCAL CODES.
- ALL STAINLESS STEEL MEMBERS SHALL BE 201 SS PER ASTM A240 (YIELD STRENGTH = 38 KSI MIN. & TENSILE STRENGTH = 75 KSI MIN.), UNLESS NOTED OTHERWISE.

GENERAL NOTES (CONTINUED):

- CONCRETE ANCHORS NOTED HEREIN SHALL BE EMBEDDED TO UN-CRACKED CONCRETE ONLY. INSTALL ALL CONCRETE ANCHORS PER MANUFACTURER'S RECOMMENDATIONS.
- THE CONTRACTOR IS RESPONSIBLE TO INSULATE ALL MEMBERS FROM DISSIMILAR MATERIALS TO PREVENT ELECTROLYSIS.
- ELECTRICAL GROUND, WHEN REQUIRED, TO BE DESIGNED & INSTALLED BY OTHERS. ALL MECHANICAL SPECIFICATIONS (CLEAR SPACE, TONNAGE, ETC) SHALL BE AS PER MANUFACTURER RECOMMENDATIONS AND ARE THE EXPRESS RESPONSIBILITY OF THE CONTRACTOR.
- ENGINEER SEAL AFFIXED HERE TO VALIDATES STRUCTURAL DESIGN AS SHOWN ONLY. USE OF THIS SPECIFICATION BY CONTRACTOR, et. al. INDEMNIFIES & SAVES HARMLESS THIS ENGINEER FOR ALL COST & DAMAGES INCLUDING LEGAL FEES & APPELLATE FEES RESULTING FROM MATERIAL FABRICATION, SYSTEM ERECTION, & CONSTRUCTION PRACTICES BEYOND THAT WHICH IS CALLED FOR BY LOCAL, STATE, & FEDERAL CODES & FROM DEVIATIONS OF THIS PLAN.
- EXCEPT AS EXPRESSLY PROVIDED HEREIN, NO ADDITIONAL CERTIFICATIONS OR AFFIRMATIONS ARE INTENDED.
- ALTERATIONS, ADDITIONS OR OTHER MARKINGS TO THIS DOCUMENT ARE NOT PERMITTED AND INVALIDATE THIS CERTIFICATION.

NOT VALID FOR PERMIT USE
OR CONSTRUCTION PURPOSES
MUST PURCHASE ORIGINAL SIGNED & SEALED
COPY AT WWW.ENGINEERINGEXPRESS.COM

NOTE REGARDING USE OF THIS DOCUMENT & USE OUTSIDE FLORIDA:

THIS IS A NON-SITE-SPECIFIC STRUCTURAL PERFORMANCE EVALUATION. A DESIGN PROFESSIONAL SHALL BE RESPONSIBLE FOR CERTIFYING THE APPLICATION OF THIS INFORMATION TO ANY SITE-SPECIFIC LOCATION. CONTACT THIS OFFICE AT ENGINEERINGEXPRESS.COM/QUOTE FOR ASSISTANCE WITH YOUR PROJECT-SPECIFIC NEEDS & FOR ADAPTATION & CERTIFICATION OF THIS DOCUMENT OUTSIDE OF FLORIDA. NO CERTIFICATION IS OFFERED FOR USE WITHOUT A CORRESPONDING SITE SPECIFIC PLAN UNDER SEPARATE CERTIFICATION.

THIS DOCUMENT IS NOT TO BE USED WITHOUT AN ORIGINAL PEN SIGNATURE & RAISED SEAL OR ELECTRONICALLY VERIFIABLE ELECTRONIC SIGNATURE MEETING ALL DISCLAIMERS SET FORTH HEREIN. RUBBED PENCIL COPIES ARE NOT PERMITTED FOR USE IN ANY WAY.

PAGE INDEX:

SHEET INDEX

# SHEET	DESCRIPTION
1	COVER SHEET
2	WALL BRACKETS PARTS & ANCHOR SCHEDULE
3	ASSEMBLY DRAWING

DIGITAL SEAL NOTICE:
IF THIS DOCUMENT IS DIGITALLY SIGNED, THIS SHEET IS PART OF A DIGITALLY SIGNED FILE. IT SHALL REMAIN IN DIGITAL FORMAT, SHALL BE VERIFIED BY ELECTRONIC MEANS, & PRINTED COPIES OF THIS DOCUMENT ARE NOT CONSIDERED SIGNED AND SEALED.
PRINTED DOCUMENT NOTICE:
IF THIS DOCUMENT IS PRINTED & DOES NOT CONTAIN AN ENGINEER'S ORIGINAL SIGNATURE & SEAL, THIS DOCUMENT IS VOID & NOT VALID FOR USE. PHOTOCOPIES ARE NOT PERMITTED FOR USE.
VALID FOR 1 PERMIT ONLY UNLNO.

ENGINEERING EXPRESS
POSTAL ADDRESS:
2234 NORTH FEDERAL HWY #7664
BOCA RATON, FL 33431
ENGINEERINGEXPRESS.COM

EVERWELL PARTS, INC.
10914 NW 33RD ST
DORAL, FL 33172
(305) 406-2331
STAINLESS STEEL WALL STAND FOR A/C EQUIPMENT
PERFORMANCE EVALUATION
FBC 8TH ED (2023) | IBC (2021)

REMARKS	DRWN	CHKD	DATE
INT. ISSUE	MRT	RWN	12/05/24

THIS DOCUMENT IS THE PROPERTY OF ENGINEERING EXPRESS, AND SHALL NOT BE REPRODUCED IN WHOLE OR PART WITHOUT WRITTEN CONSENT OF ENGINEERING EXPRESS. ALTERATIONS, ADDITIONS, OR OTHER MARKINGS TO THIS DOCUMENT ARE NOT PERMITTED AND INVALIDATE OUR CERTIFICATION.

COPYRIGHT ENGINEERING EXPRESS®

24-80838

SCALE: NTS UNLESS NOTED

1 OF 3

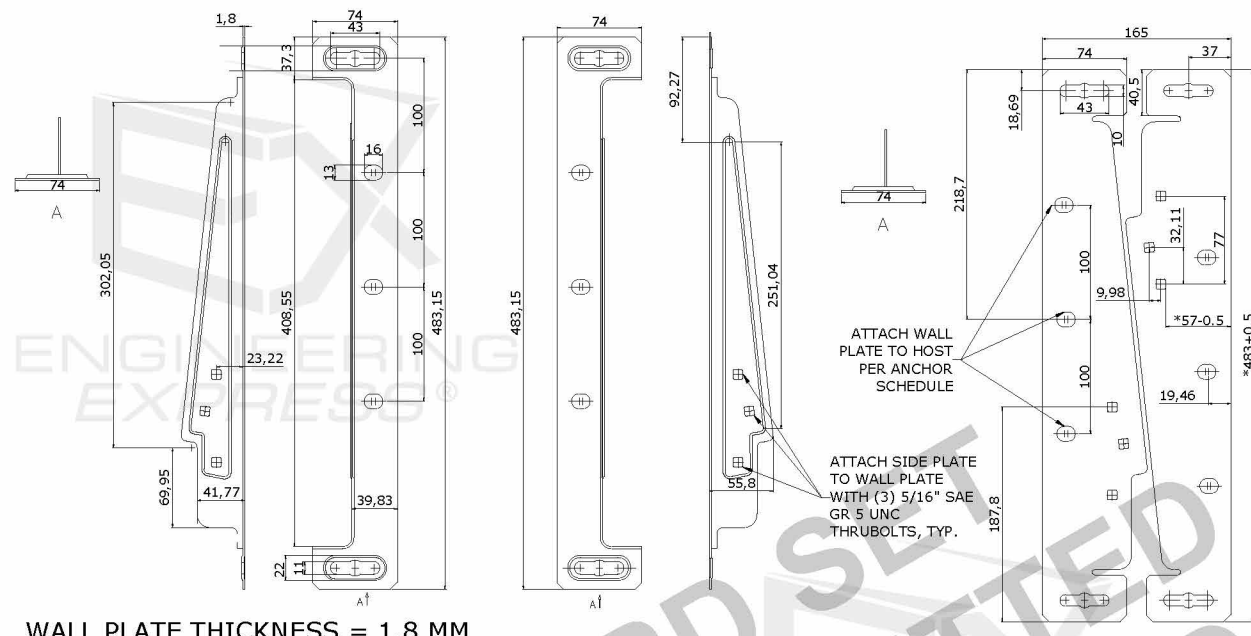
VISIT ECALC.IO/80838

FOR SITE-SPECIFIC DEVIATIONS
& MORE INFORMATION ABOUT THIS DOCUMENT
OR SCAN THIS QR CODE

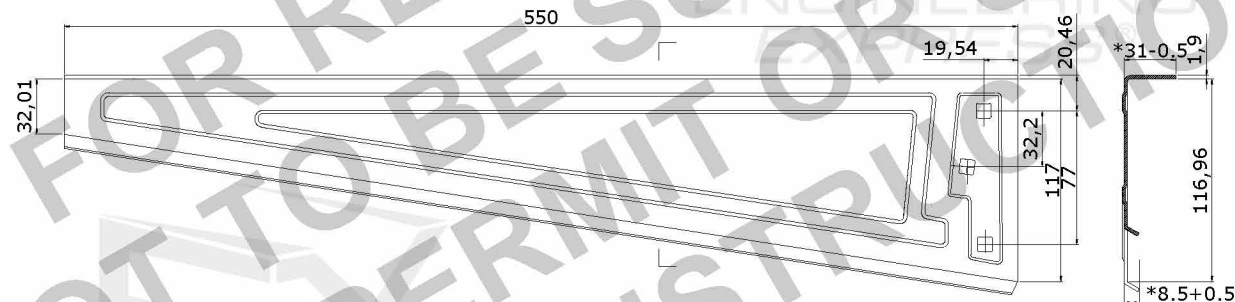
VISIT ENGINEERINGEXPRESS.COM/STORE
FOR ADDITIONAL PLANS, REPORTS & RESOURCES



STAINLESS STEEL WALL BRACKET PARTS & ANCHOR SCHEDULE



- 1 201 SS WALL PLATE (2 PCS)
- 2 N.T.S. MULTIPLE VIEWS

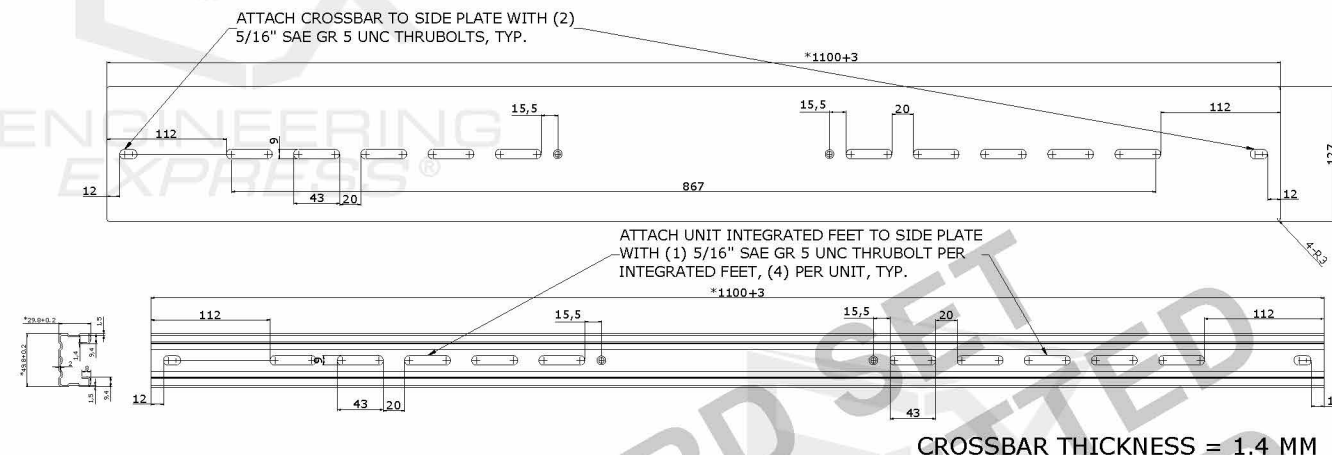


- 2 201 SS SIDE PLATE (2 PCS)
- 2 N.T.S. MULTIPLE VIEWS

****BRACKET PARTS DIMENSIONS SHOWN HEREIN ARE IN MILLIMETERS****

1 INCH = 25.4 MM

**NOT VALID FOR PERMIT USE OR CONSTRUCTION PURPOSES
MUST PURCHASE ORIGINAL SIGNED & SEALED COPY AT WWW.ENGINEERINGEXPRESS.COM**



- 3 201 SS CROSSBAR (2 PCS)
- 2 N.T.S. MULTIPLE VIEWS

NOTES:

- WALL BRACKET SUPPORTS AS ILLUSTRATED HEREIN ARE INTENDED FOR ATTACHMENT TO VERTICAL SURFACES ONLY. ANY INSTALLATIONS TO ROOF-TOP HORIZONTAL SURFACES ARE NOT APPROVED BY THIS DOCUMENT.
- ALLOWABLE MECHANICAL UNITS DIMENSIONS & NET WEIGHT:
 WIDTH = 400 - 800 MM (15.75 - 31.5 IN)
 DEPTH = 260 - 480 MM (10.24 - 19 IN)
 HEIGHT = 35 IN MAX.
 NET WEIGHT = 45 - 113 KG (100 LB - 250 LB)
- MECHANICAL UNITS INTEGRATED FEET SHALL BE 18GA THICK MIN., ASTM A653 GR 33 STEEL OR STRONGER

ANCHOR SCHEDULE:

SUBSTRATE	ANCHOR
CONCRETE: (5" THICK MIN, 3000 PSI MIN.)	3/8"Ø DEWALT SCREW-BOLT+ WITH STD SAE WASHER, 3-1/4" FULL EMBED, 4" MIN. EDGE DISTANCE, SPACING AS ILLUSTRATED IN ELEVATION/SECTION.
GROUT FILLED CMU: (SHALL CONFORM TO ASTM C90)	3/8"Ø DEWALT SCREW-BOLT+ WITH STD SAE WASHER, 3-1/4" FULL EMBED TO GROUT FILLED BLOCK, 6" MIN. EDGE DISTANCE, SPACING AS ILLUSTRATED IN ELEVATION/SECTION.
WOOD: (G=0.55 MIN.)	3/8"Ø CARBON STEEL WOOD LAG SCREW W/ 1"Ø SAE WASHER, 2-3/4" MIN. THREAD PENETRATION TO WOOD HOST, 3/4" MIN. EDGE DISTANCE, SPACING AS ILLUSTRATED IN SECTION.

ANCHOR SCHEDULE NOTES:

- EMBEDMENT AND EDGE DISTANCE EXCLUDES FINISHES, IF APPLICABLE.
- ENSURE MINIMUM EDGE DISTANCE AS NOTED IN ANCHOR SCHEDULE.
- INSTALL ALL ANCHORS PER MANUFACTURER'S SPECIFICATIONS.
- PRE-DRILL WOOD LAGS TO AVOID SPLITTING OF WOOD MEMBERS.

DIGITAL SEAL NOTICE:
IF THIS DOCUMENT IS DIGITALLY SIGNED, THIS SHEET IS PART OF A DIGITALLY SIGNED FILE. IT SHALL REMAIN IN DIGITAL FORMAT, SHALL BE VERIFIED BY ELECTRONIC MEANS, & PRINTED COPIES OF THIS DOCUMENT ARE NOT CONSIDERED SIGNED AND SEALED.
PRINTED DOCUMENT NOTICE:
IF THIS DOCUMENT IS PRINTED & DOES NOT CONTAIN AN ENGINEER'S ORIGINAL SIGNATURE & SEAL, THIS DOCUMENT IS VOID & NOT VALID FOR USE. PHOTOCOPIES ARE NOT PERMITTED FOR USE.
VALID FOR 1 PERMIT ONLY, H.W.D.

ENGINEERING EXPRESS
 POSTAL ADDRESS:
 2234 NORTH FEDERAL HWY #7664
 BOCA RATON, FL 33431
 ENGINEERINGEXPRESS.COM

EVERWELL PARTS, INC.
 10914 NW 33RD ST
 DORAL, FL 33172
 (305) 406-2331
 STAINLESS STEEL WALL STAND FOR A/C EQUIPMENT
 PERFORMANCE EVALUATION
 FBC 8TH ED (2023) | IBC (2021)

REMARKS	DRWN	CHKD	DATE
INT. ISSUE	MRT	RWN	12/05/24

THIS DOCUMENT IS THE PROPERTY OF ENGINEERING EXPRESS, AND SHALL NOT BE REPRODUCED IN WHOLE OR PART WITHOUT WRITTEN CONSENT OF ENGINEERING EXPRESS. ALTERATIONS, ADDITIONS, OR OTHER MARKINGS TO THIS DOCUMENT ARE NOT PERMITTED AND INVALIDATE OUR CERTIFICATION.

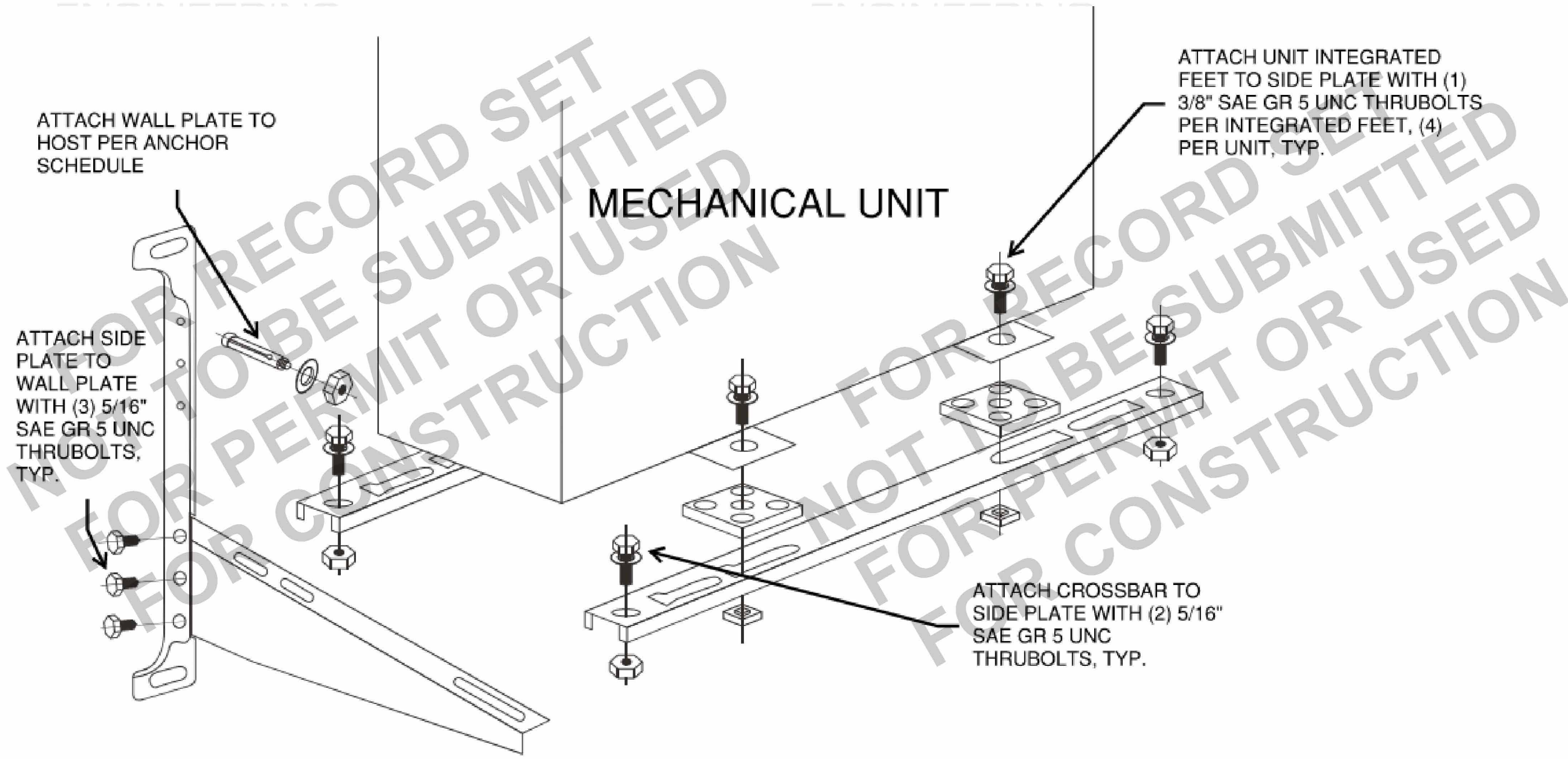
COPYRIGHT ENGINEERING EXPRESS®
 24-80838
 SCALE: NTS UNLESS NOTED
 2 OF 3

MILTONRIVERA\users\miltonrivera\engineering\production - documents\projects\24-124-80838 ew202-3-ssv43 wall bracket.dwg 12/3/2024 4:15 PM

STAINLESS STEEL WALL BRACKET ASSEMBLY

NOT VALID FOR PERMIT USE
OR CONSTRUCTION PURPOSES
MUST PURCHASE ORIGINAL SIGNED & SEALED
COPY AT WWW.ENGINEERINGEXPRESS.COM

DIGITAL SEAL NOTICE:
IF THIS DOCUMENT IS DIGITALLY SIGNED,
THIS SHEET IS PART OF A DIGITALLY SIGNED
FILE. IT SHALL REMAIN IN DIGITAL FORMAT,
SHALL BE VERIFIED BY ELECTRONIC MEANS, &
PRINTED COPIES OF THIS DOCUMENT ARE NOT
CONSIDERED SIGNED AND SEALED.
PRINTED DOCUMENT NOTICE:
IF THIS DOCUMENT IS PRINTED & DOES
NOT CONTAIN AN ENGINEER'S ORIGINAL
SIGNATURE & SEAL, THIS DOCUMENT IS VOID
& NOT VALID FOR USE. PHOTOCOPIES ARE
NOT PERMITTED FOR USE.
VALID FOR 1 PERMIT ONLY UNLESS



ENGINEERING EXPRESS
POSTAL ADDRESS:
2234 NORTH FEDERAL HWY #7664
BOCA RATON, FL 33431
ENGINEERINGEXPRESS.COM

EVERWELL PARTS, INC.
10914 NW 33RD ST
DORAL, FL 33172
(305) 406-2331
STAINLESS STEEL WALL STAND FOR A/C EQUIPMENT
PERFORMANCE EVALUATION
FBC 8TH ED (2023) | IBC (2021)

REMARKS	DRWN	CHKD	DATE
INT. ISSUE	MRT	RWN	12/05/24

THIS DOCUMENT IS THE PROPERTY OF ENGINEERING EXPRESS, AND SHALL NOT BE REPRODUCED IN WHOLE OR PART WITHOUT WRITTEN CONSENT OF ENGINEERING EXPRESS. ALTERATIONS, ADDITIONS, OR OTHER MARKINGS TO THIS DOCUMENT ARE NOT PERMITTED AND INVALIDATE OUR CERTIFICATION.

COPYRIGHT ENGINEERING EXPRESS®

24-80838

SCALE: NTS UNLESS NOTED

3 OF 3

1 WALL BRACKET ASSEMBLY
3 N.T.S. ISOMETRIC VIEW

MILTONRIVERA\users\miltonrivera\engineering\express\production - documents\projects\24-124-80838 ew202-3-ssv43 wind load certificate\work\drawings & cad\24-80838c ew202-3-ssv43 wall bracket.dwg 12/3/2024 4:15 PM