



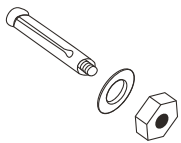
# Wall Bracket Double Cross Arm EW202-3-SSB43

## Assembly Instructions Sheet

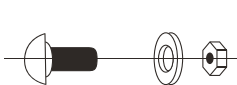
For more information please visit:  
[www.everwellparts.com](http://www.everwellparts.com) [info@everwellparts.com](mailto:info@everwellparts.com)

### Part List

1) Expansion bolts  
Size: M8\*80mm.



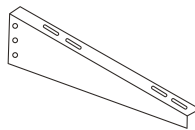
2) Carriage bolts  
Size: M8\*16 6pcs.



3) Wall plate  
2pcs.



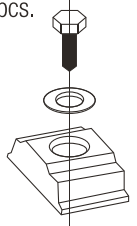
4) Side plate  
2pcs.



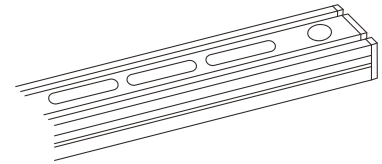
5) Hexagon head bolts  
M8\*30 4pcs.



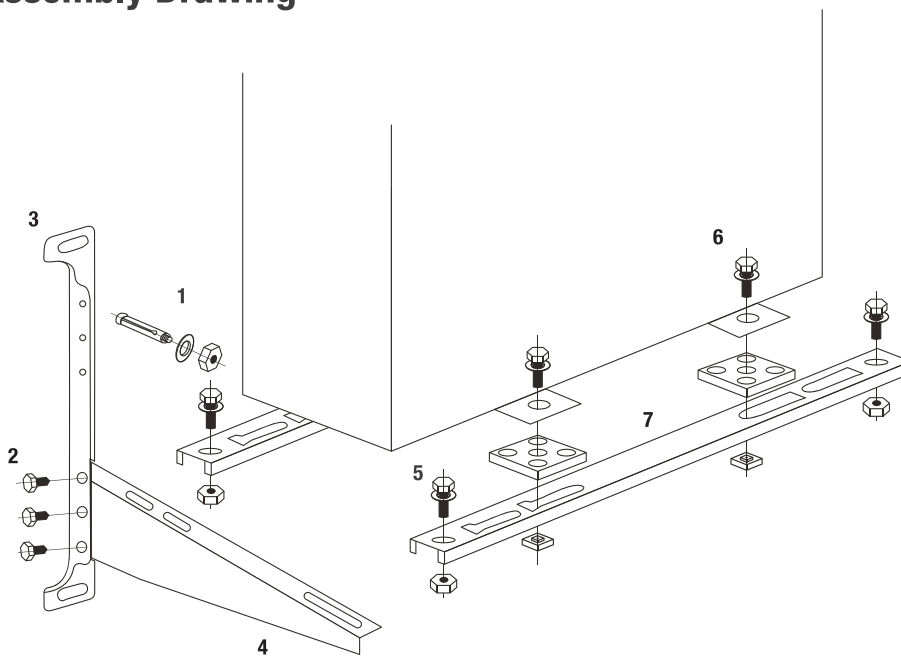
6) Hexagon head bolts  
M8\*45 4pcs.



7) Crossbar 2pcs.



### Assembly Drawing



Max. Loading: 551lb / 250kg

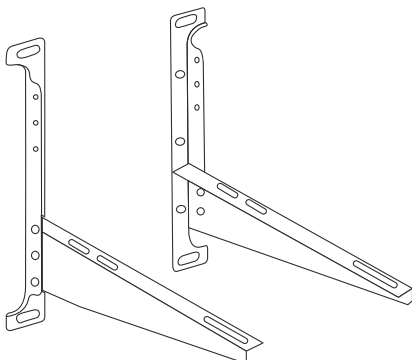
Match Unit: 18000-24000BTU

Max. Depth: 10.24-19in / 260-480mm

Max. Width: 15.75-31.5in / 400-800mm

### Install The Parts

To fasten the wall plate and side plate with hexagon head bolts.



Faster the crossbar on the side platem then make sure all fasteners are tighten.

Check all screws for fastening and mount the brackets to the wall with expansion bolts, then install the air conditioner unit on the bracket with screws.

Caution:

1. Please follow the installation instruction.
2. Do not make any assembly modification or fixing.
3. Avoid contact with acid-base liquid.