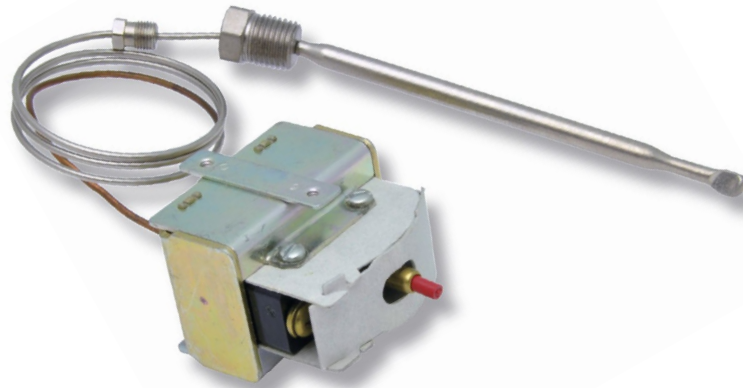


LC Series • 5225 Series

Limit Controls

Robertshaw®



Description

The Robertshaw® LC Series limit control is designed for any appliance where temperature protection is needed. All LC Series controls are non-adjustable, factory calibrated, and feature negative biased power element diaphragms. The LC Series is a proven safety control for commercial and specialty applications. They are available in automatic or manual reset versions with temperature settings from 340°F to 600°F (170°C to 316°C).

Features and Benefits

- Calibrated temperature settings 340°F to 600°F in 5°F increments (170°C to 316°C)
- Bulb and capillary assemblies available in copper, nickel plated copper or stainless steel
- Available in manual reset or automatic operation
- Control function is designed to interrupt power in the appliance circuit at the calibrated temperature
- Automatic actuation of the control switch at or below the calibrated temperature if the pressure integrity of the thermal element is compromised
- For all models: Ambient temperature is 185°F (85°C)
- Maximum continuous temperature on bulb is 600°F (316°C)
- Agency Certifications: UL E16835, CE (LCC and LCCM models) CE683531 and CE (LCH and LCHM models) CE683530

Specifications

Model	Description	UL Rating	European
LCH	SPST - Break on Temperature Rise Manual reset. Type M2*	30 A, 250 VA PD @ 125-480 V AC 35 VA PD @ 24 V, 60 Hz	30 A @ 480 V AC
LCHM	SPST - Break on Temperature Rise, Manual Reset. Type M2* Millivolt Application	400 mA @ 500 mV DC	480 mA @ 500 mV DC
LCC	SPDT-Make and/or Break on Temperature Rise, Automatic Reset	25 A, 250 VA PD @ 125-480 V, 60 Hz 35 VA Pilot Duty @ 24 V AC	25 A @ 480 V AC
LCCM	SPDT-Make and/or Break on Temperature Rise, Automatic Reset. Millivolt Application	125 VA PD @ 125-480 V, 60 Hz 400 mA @ 500 mV DC	480 mA @ 500 mV DC

*M2 switch - trip free - will not recycle if reset button is depressed

Robertshaw

Customer Service
+1 800 304 6563
HVACCustomerService
@robertshaw.com

Technical Service
+1 800 445 8299
TechnicalService
@robertshaw.com

Robertshaw is a trademark of Robertshaw, its subsidiaries and/or affiliated companies. All other brands mentioned may be the trademarks of their respective owners.

www.robertshaw.com
©2023 Robertshaw
03/23 150-2365 Rev C

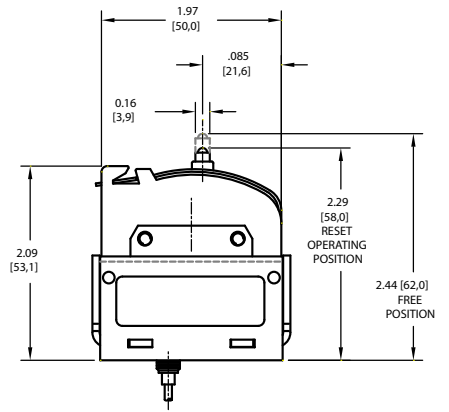
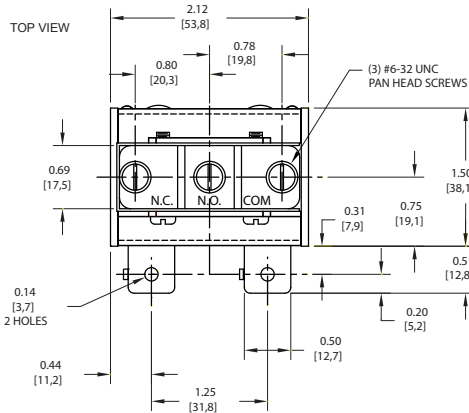
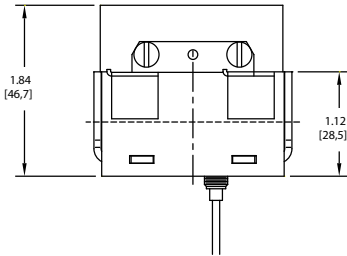


Product Dimensions

Dimensions are inches and [millimeters].

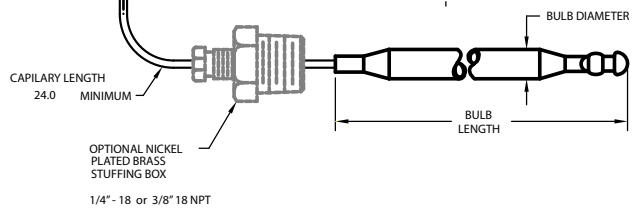
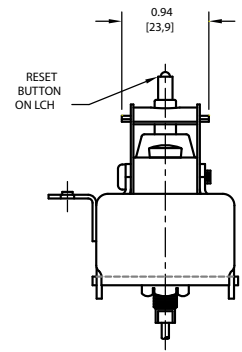
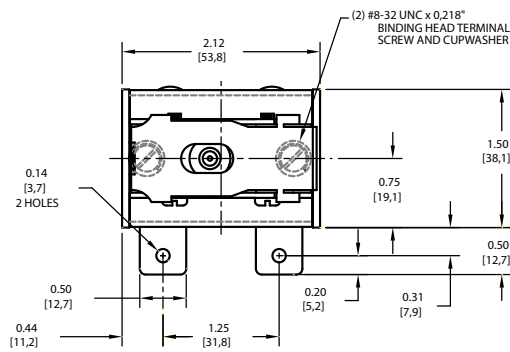
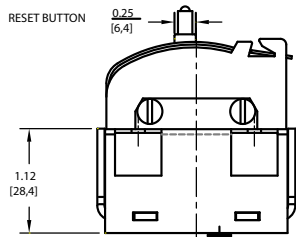
MODELS LCC & LCCM

FRONT VIEW



MODELS LCH & LCHM

RESET BUTTON



Available Bulb Dimensions

Inches	0.187	0.250	0.312
[Millimeters]	4,8	6,4	7,9

Available Capillary Lengths

24" to 66" in 6" increments
610mm to 1675mm in 228mm increments